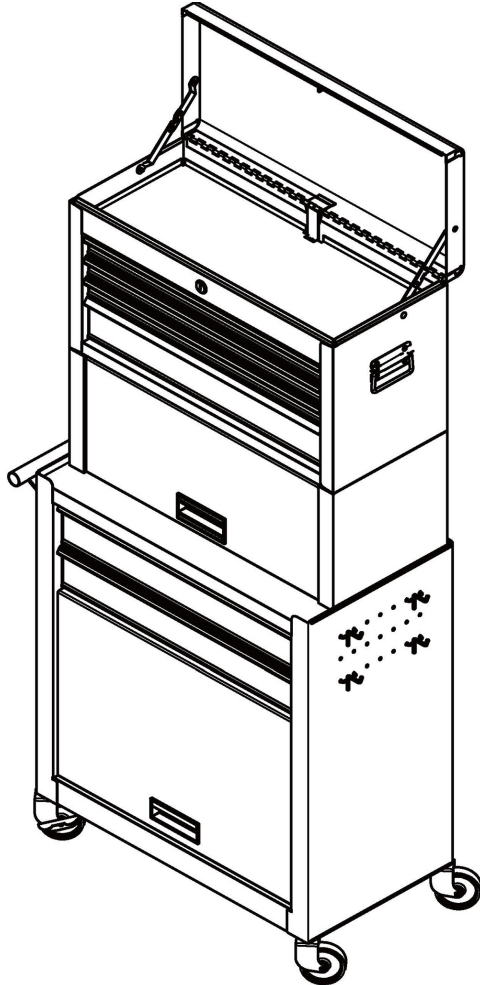


SGS STC300 3-PIECE TOOL STORAGE UNIT

OWNER'S MANUAL



FOR YOUR SAFETY
PLEASE READ THESE INSTRUCTIONS CAREFULLY
AND RETAIN THEM FOR FUTURE USE.



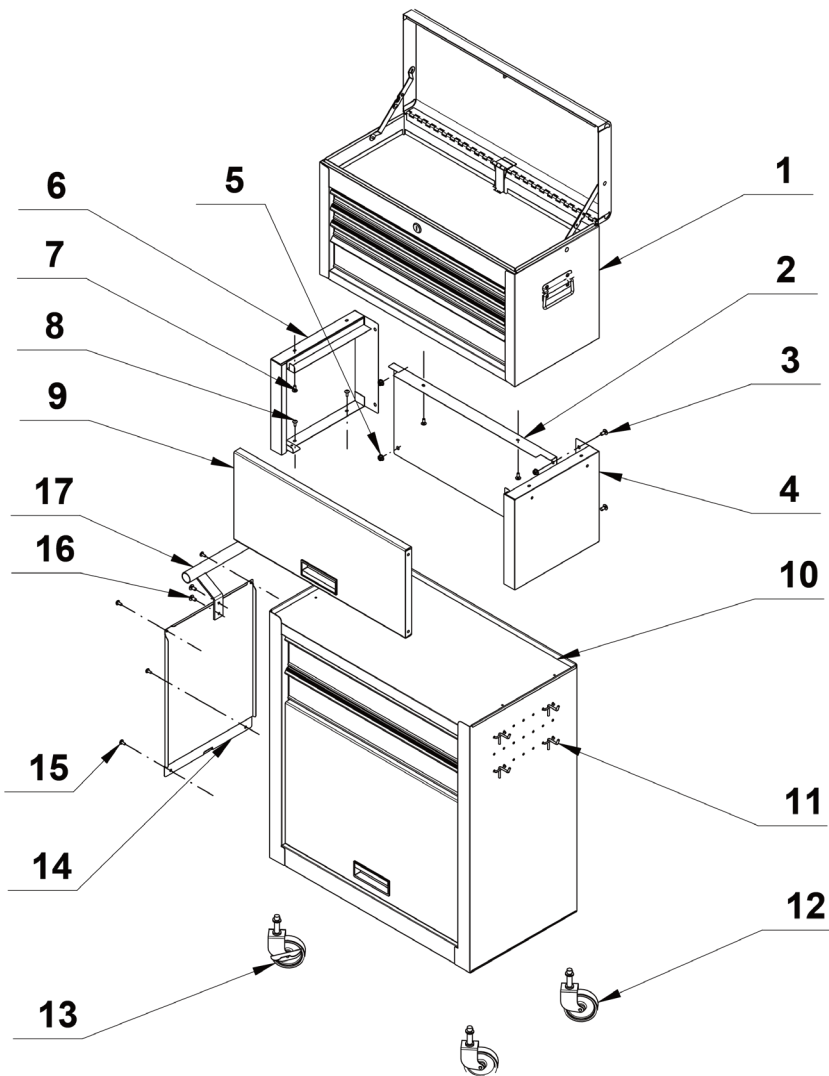
WARNING

1. Movement, assembly, and installation of the product should be done by at least two people to avoid any injury.
2. DO NOT leave children unattended near the product.
3. DO NOT stand on the product or lean on the drawers or worktop.
4. WEAR SAFETY GLASSES when removing or re-positioning the slides. The tools could slip, which may cause personal injury.
5. DO NOT alter the product in any manner. For example, do not weld external lock bars or attach unapproved electrical equipment. This may cause product damage, personal injury, or death.
6. DO NOT OVERLOAD PRODUCT! The components of the product are designed to maximum combined weight capacity of 100 Kg.
7. BE CAREFUL when opening more than one drawer. The product could become unstable and tip, which may cause product damage or personal injury.
8. High risk of tipping if the product is not installed correctly. Securely attach the product to the wall to avoid serious injury.

UNPACKING

1. Please make sure you have received all your packages and components for this product.
2. Start by placing the package on flat covered ground.
3. Remove all cardboard, honeycomb board, foam packaging material and clear plastic bags.
4. Recycle all packaging materials.
5. Verify all the contents are included and gather the tools required.

PARTS DIAGRAM



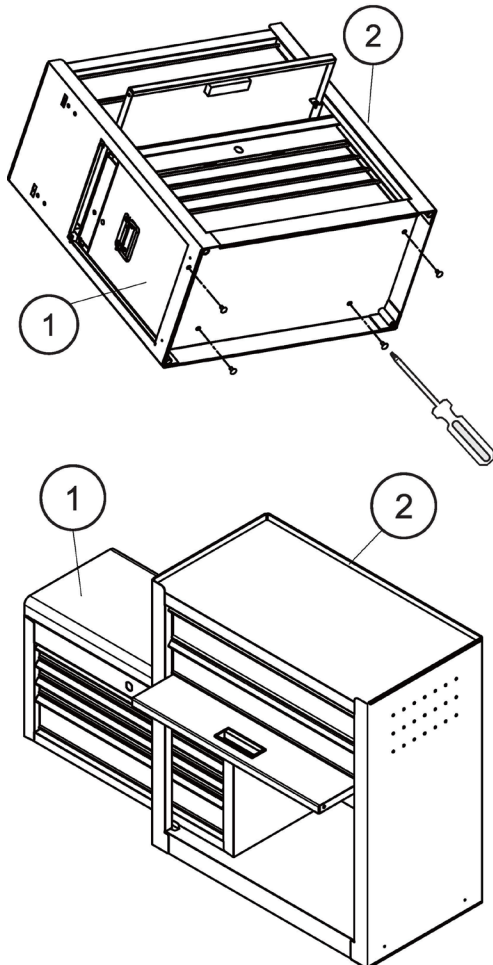
PARTS LIST

No.	Description	Qty.	Part No.
1	Top Chest	1	908038
2	Back panel	1	908039
3	M6 x 12 Bolt	4	908040
4	Right panel	1	908041
5	M6 Nut	4	908042
6	Left panel	1	908043
7	M5 x 12 Bolt	4	908044
8	Tapping screw 5x10	4	908045
9	Door	1	908046
10	Roller Cabinet	1	908047
11	Hook	4	908048
12	Caster	2	908049
13	Caster with brake	2	908050
14	Side panel	1	908051
15	Tapping screw 4x8	4	908052
16	M6 x 12 Bolt	4	908053
17	Handle	1	908054

ASSEMBLY INSTRUCTIONS

1. REMOVE CHEST

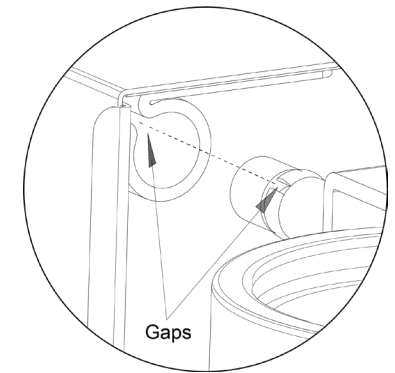
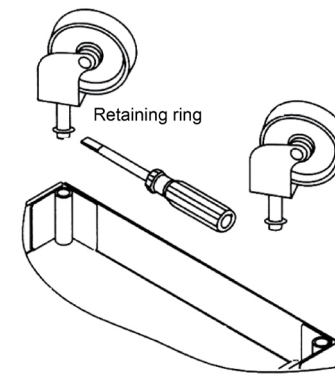
Place cabinet on a level surface. Remove the screws holding the chest inside the cabinet. Slowly remove chest from the cabinet.



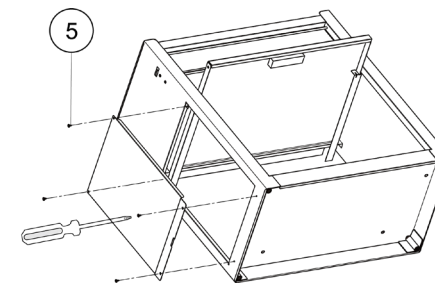
ASSEMBLY INSTRUCTIONS

2. WHEEL ASSEMBLY

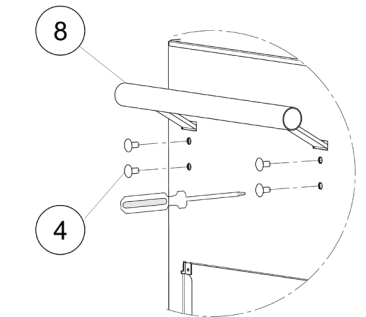
Slightly spread apart the split bearing on the shaft if the fit is loose. Crimp split bearing slightly with pliers. Make only slight adjustments until caster fits properly. Align the gaps on the retaining ring with the cabinet socket gaps. Fully insert caster into the socket. Fit should be secure.



3. SIDE PANEL ASSEMBLY

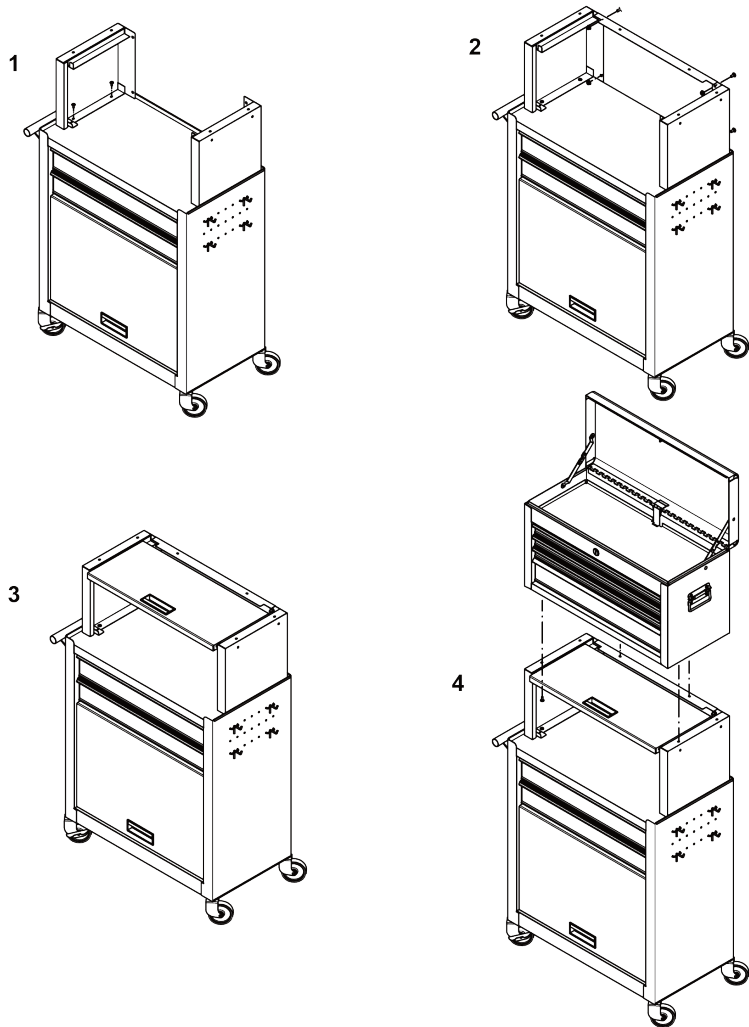


4. HANDLE ASSEMBLY



ASSEMBLY INSTRUCTIONS

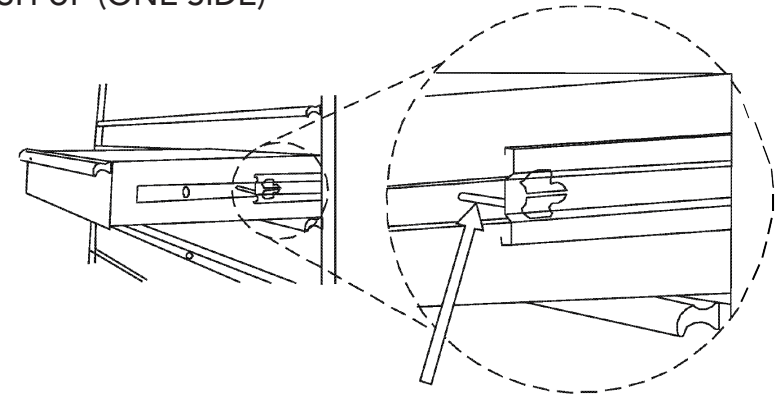
5. MIDDLE CHEST ASSEMBLY



MAINTENANCE

- Lubricate the top and bottom channels of the drawer slides at least twice a year.
- Do not open more than one loaded drawer at a time.
- The maximum load capacity of the unit is 90 Kg (200lbs).

PUSH UP (ONE SIDE)



PUSH DOWN (OTHER SIDE)

